



# DRILLING LOG



FROM :(mt) 640

TO :(mt) 2610

SCALE : 1/ 1000

Well Name : WKF W-21A

Company : ESSO AUSTRALIA

Country : AUSTRALIA

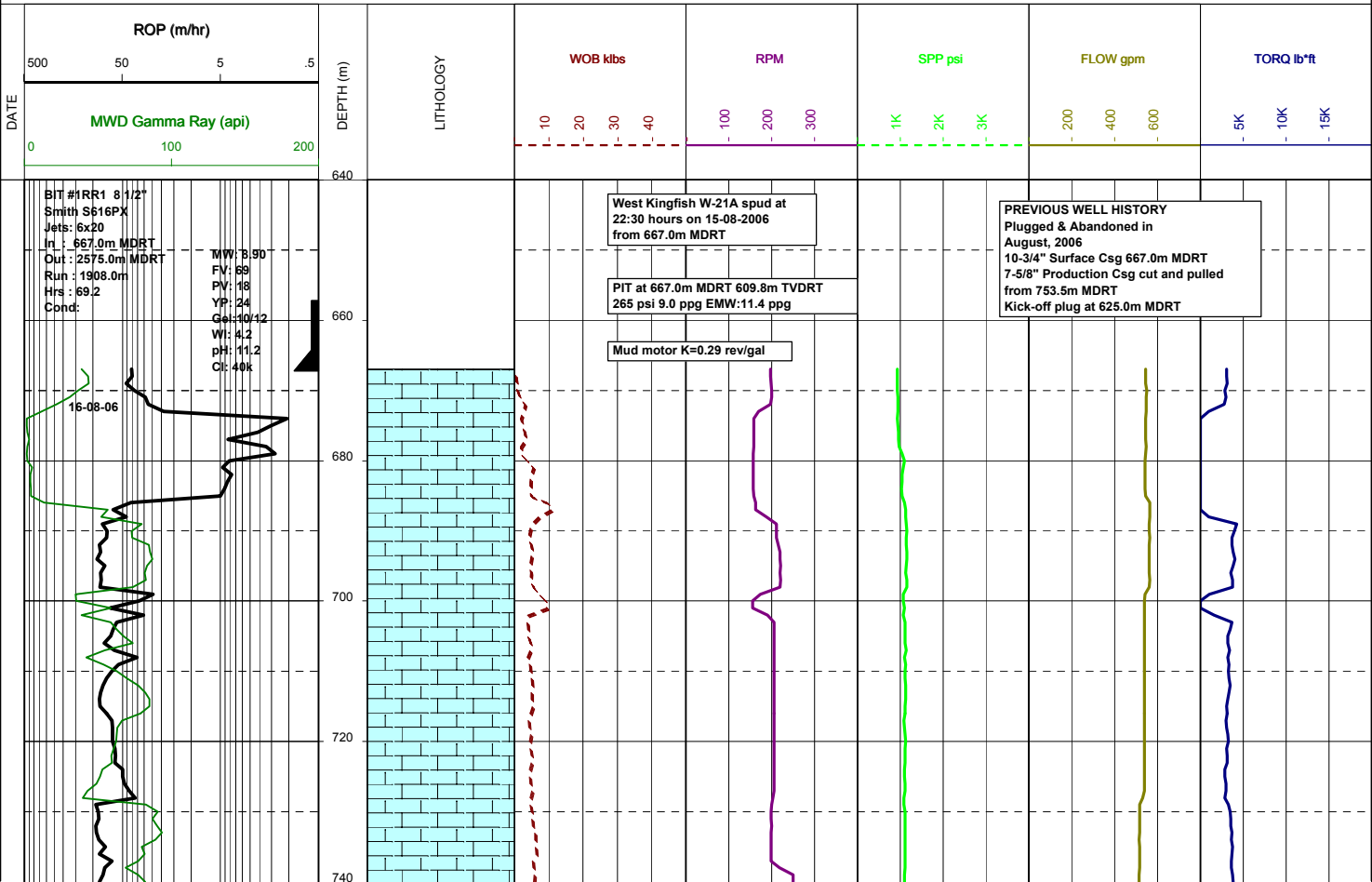
RT-MSL : 33.43m

Final TD : 2575.0m TVDRT

RT-SEABED : 109.56m

Final TVD : 2412.6m TVDRT

Generated by ALS Package

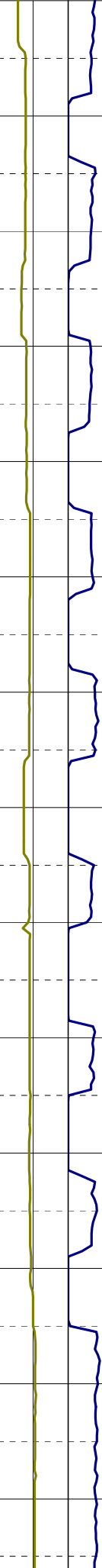
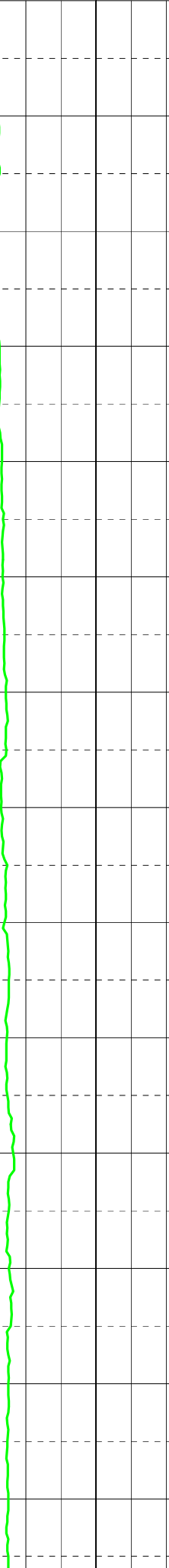
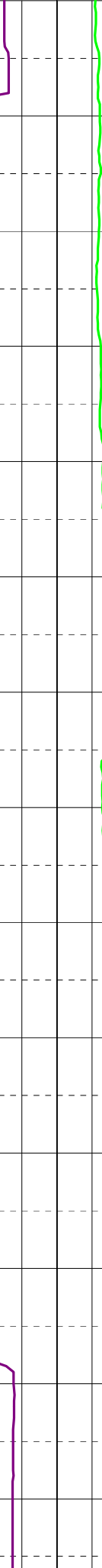
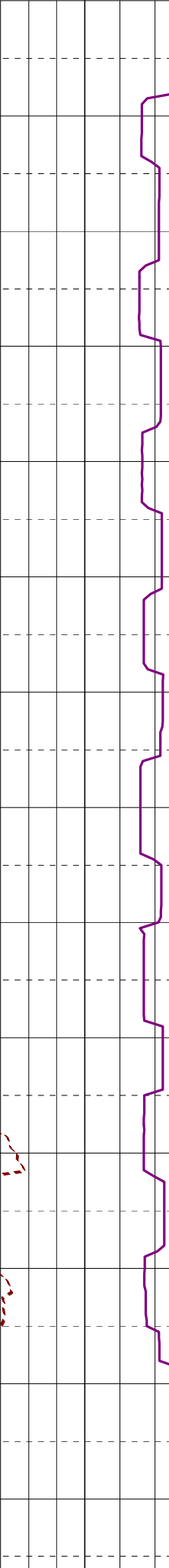
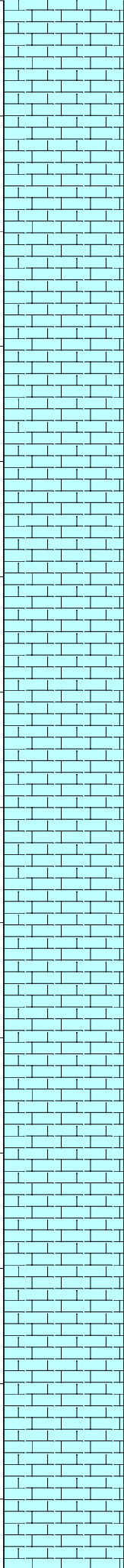


MW: 9.00  
FV: 92  
PV: 21  
YP: 42  
Gel: 12/18  
Wt: 4.0  
pH: 9.0  
Cl: 40k

MW: 9.20  
FV: 75  
PV: 25  
YP: 92  
Gel: 12/18  
Wt: 3.5  
pH: 9.0  
Cl: 37k

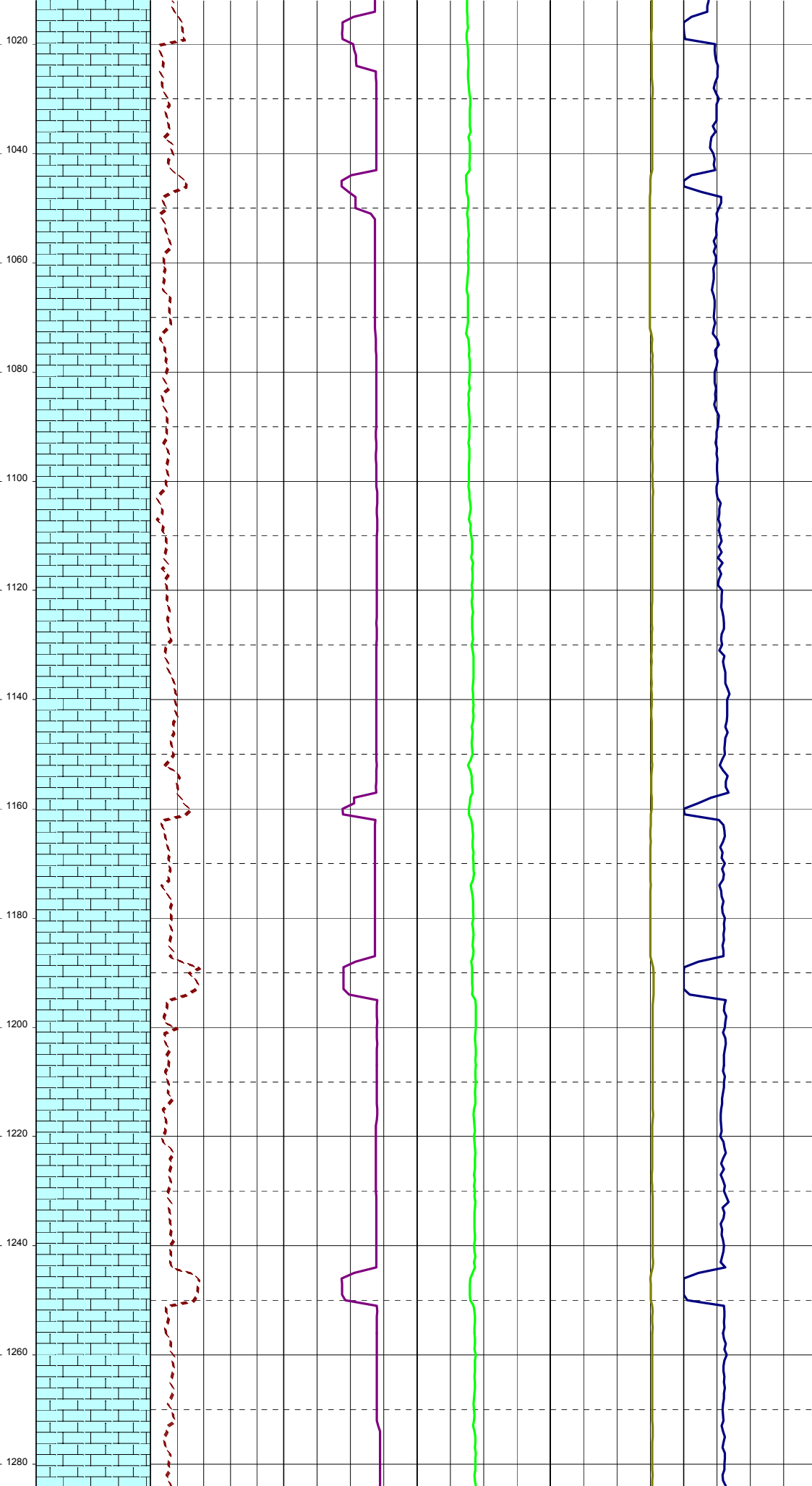
MW: 9.20  
FV: 78  
PV: 19  
YP: 36  
Gel: 10/14

760  
780  
800  
820  
840  
860  
880  
900  
920  
940  
960  
980  
1000



WI: 3.5  
pH: 9.3  
Cl: 40k

MW: 9.20  
FV: 70  
PV: 21  
YF: 54  
Gel: 11/16  
WI: 3.4  
pH: 9.2  
Cl: 40k

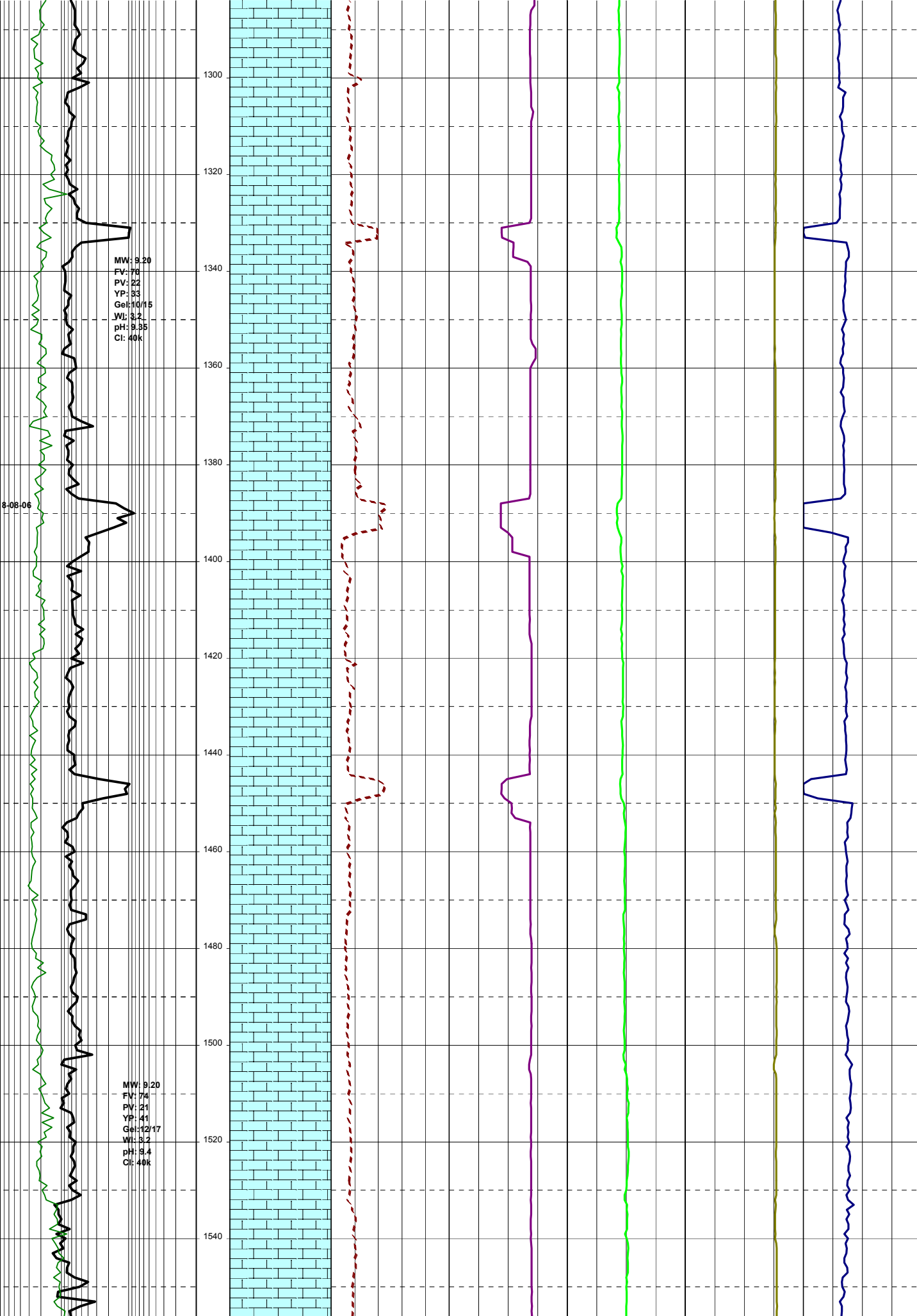


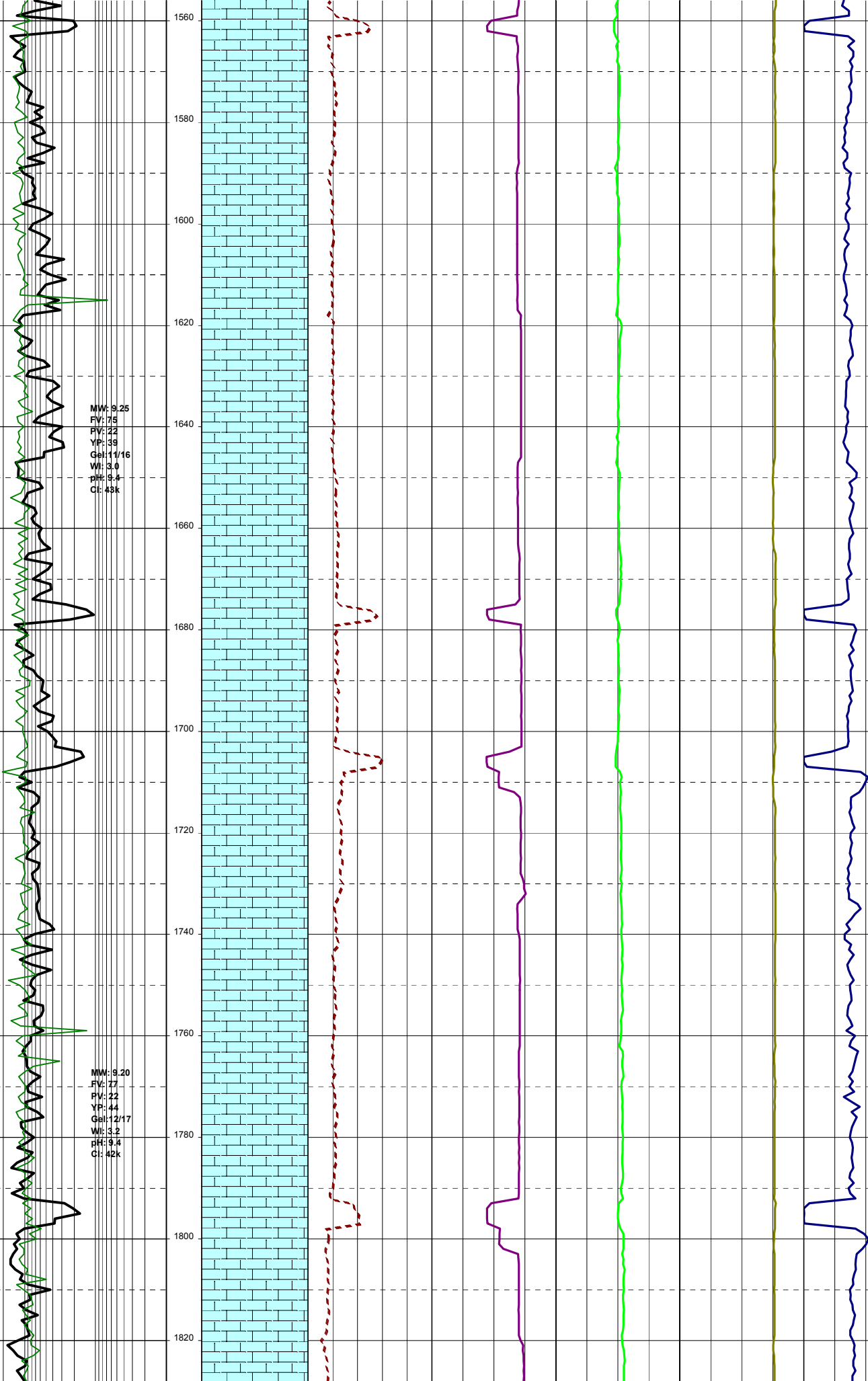
MW: 9.20  
FV: 76  
PV: 22  
YP: 33  
Gel: 10/15  
WJ: 3.2  
pH: 9.55  
Cl: 40k

MW: 9.20  
FV: 74  
PV: 21  
YP: 41  
Gel: 12/17  
WJ: 3.2  
pH: 8.4  
Cl: 40k

18-08-06

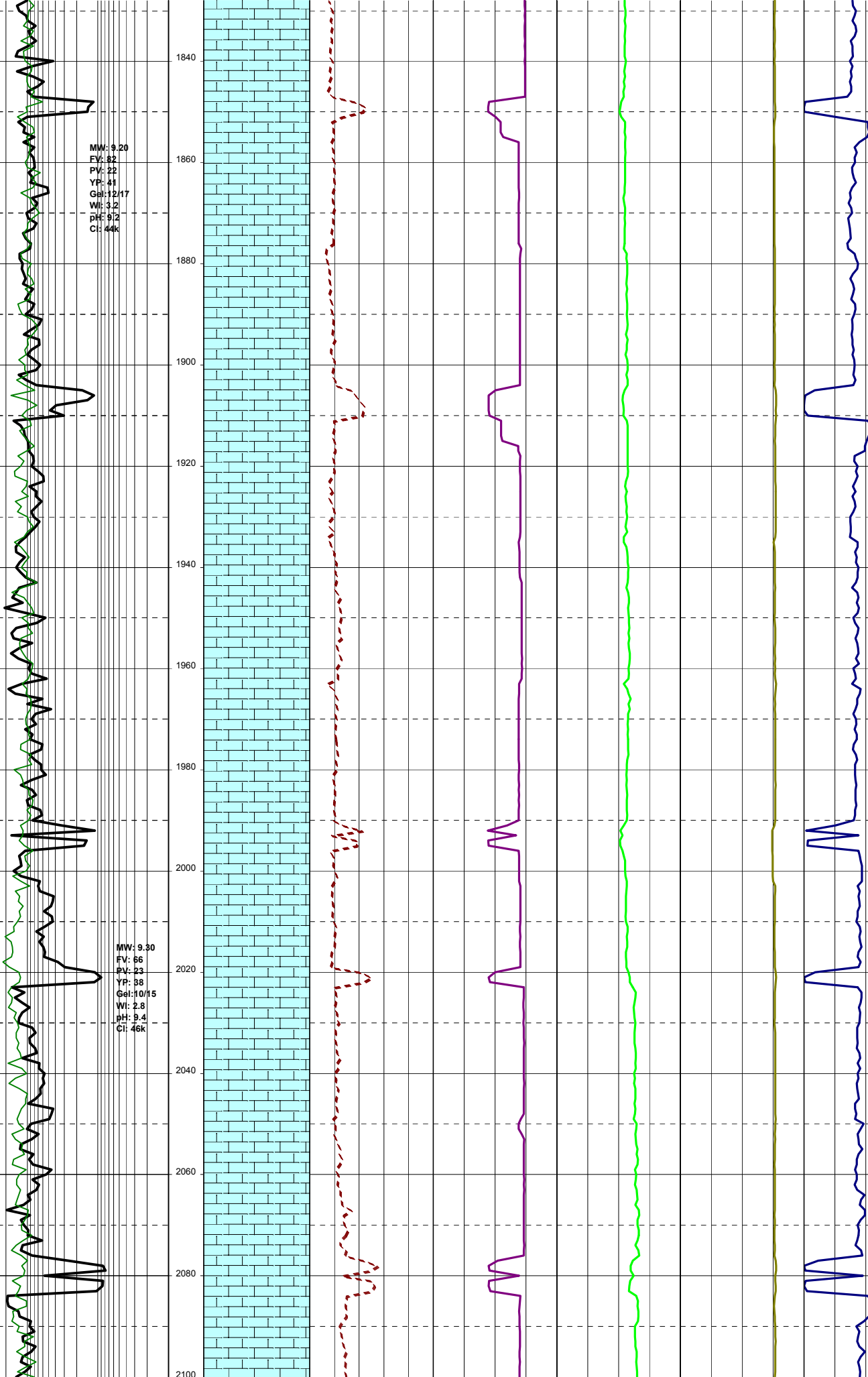
1300  
1320  
1340  
1360  
1380  
1400  
1420  
1440  
1460  
1480  
1500  
1520  
1540





MW: 9.25  
FV: 75  
PV: 22  
YP: 39  
Gel: 11/16  
Wt: 3.0  
pH: 9.4  
Cl: 43k

MW: 9.20  
FV: 77  
PV: 22  
YP: 44  
Gel: 12/17  
Wt: 3.2  
pH: 9.4  
Cl: 42k

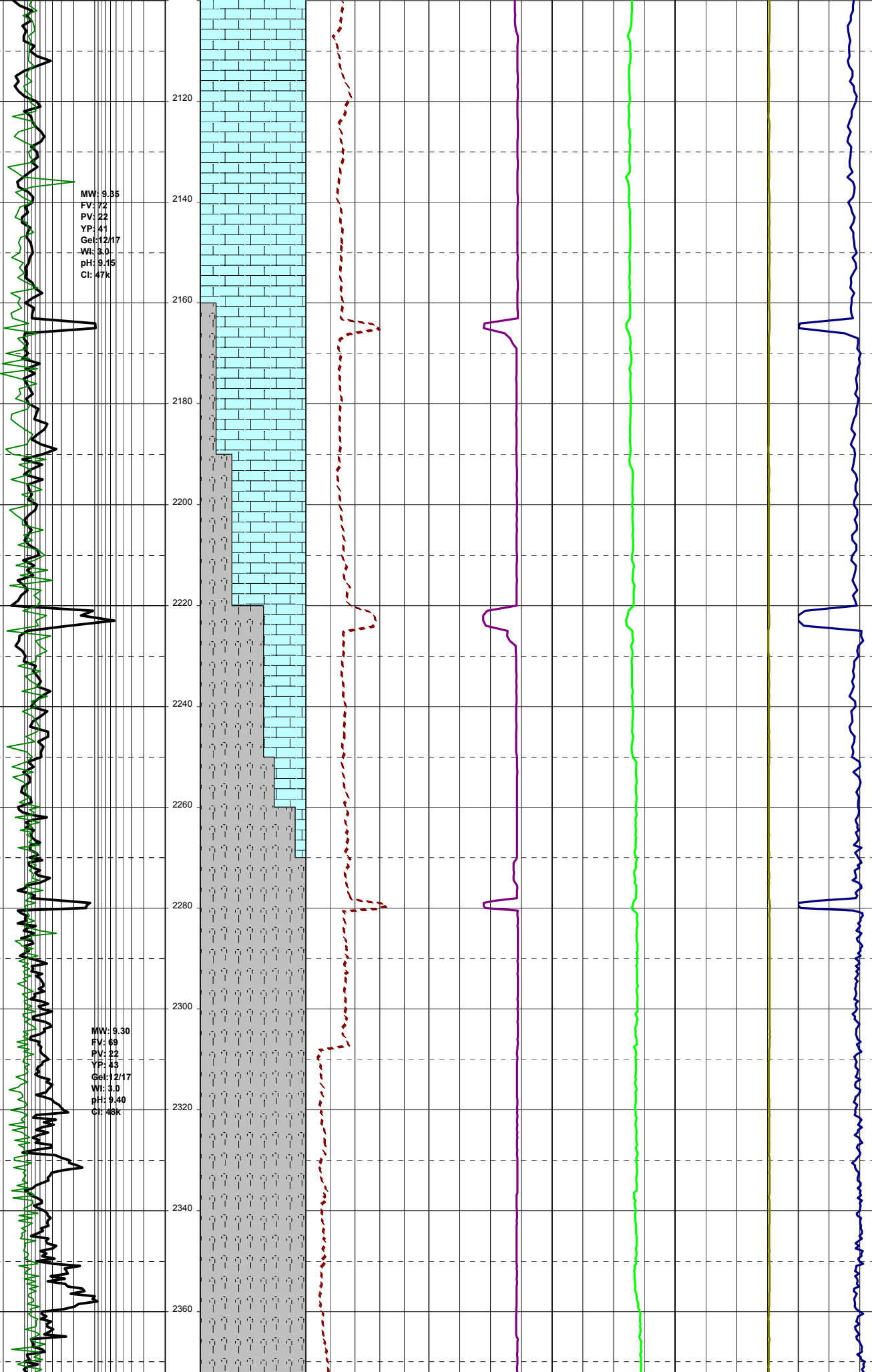


MW: 9.35  
FV: 7.2  
PV: 22  
YP: 41  
Gel: 12/17  
WI: 3.0  
pH: 9.15  
Cl: 47k

MW: 9.30  
FV: 69  
PV: 22  
YP: 43  
Gel: 12/17  
WI: 3.0  
pH: 9.40  
Cl: 38k

2120  
2140  
2160  
2180  
2200  
2220  
2240  
2260  
2280  
2300  
2320  
2340  
2360

20-08-06



MW: 9.40  
FV: 71  
PV: 23  
YP: 43  
Gel: 11/17  
Wt: 2.8  
pH: 9.00  
Cl: 47k

MW: 9.55  
FV: 74  
PV: 26  
YP: 42  
Gel: 11/17  
Wt: 2.8  
pH: 8.90  
Cl: 47k

21-08-06

WKF W-21A reached Total Depth of  
2575.0m MDRT 2412.6m TVDRT  
(-2379.2m TVDSS) at 01:00 hours  
on 21-08-2006

